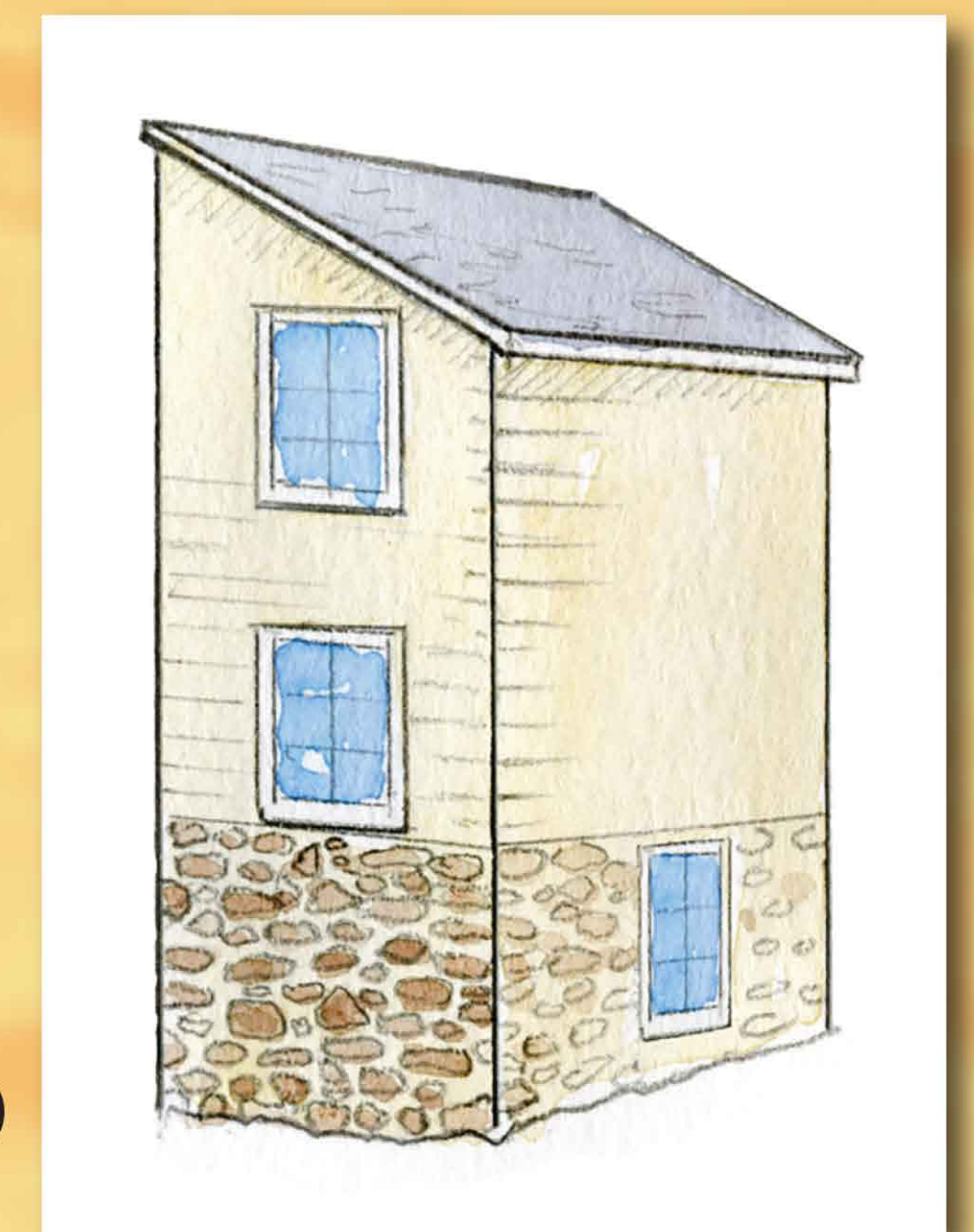


Merrick Log House



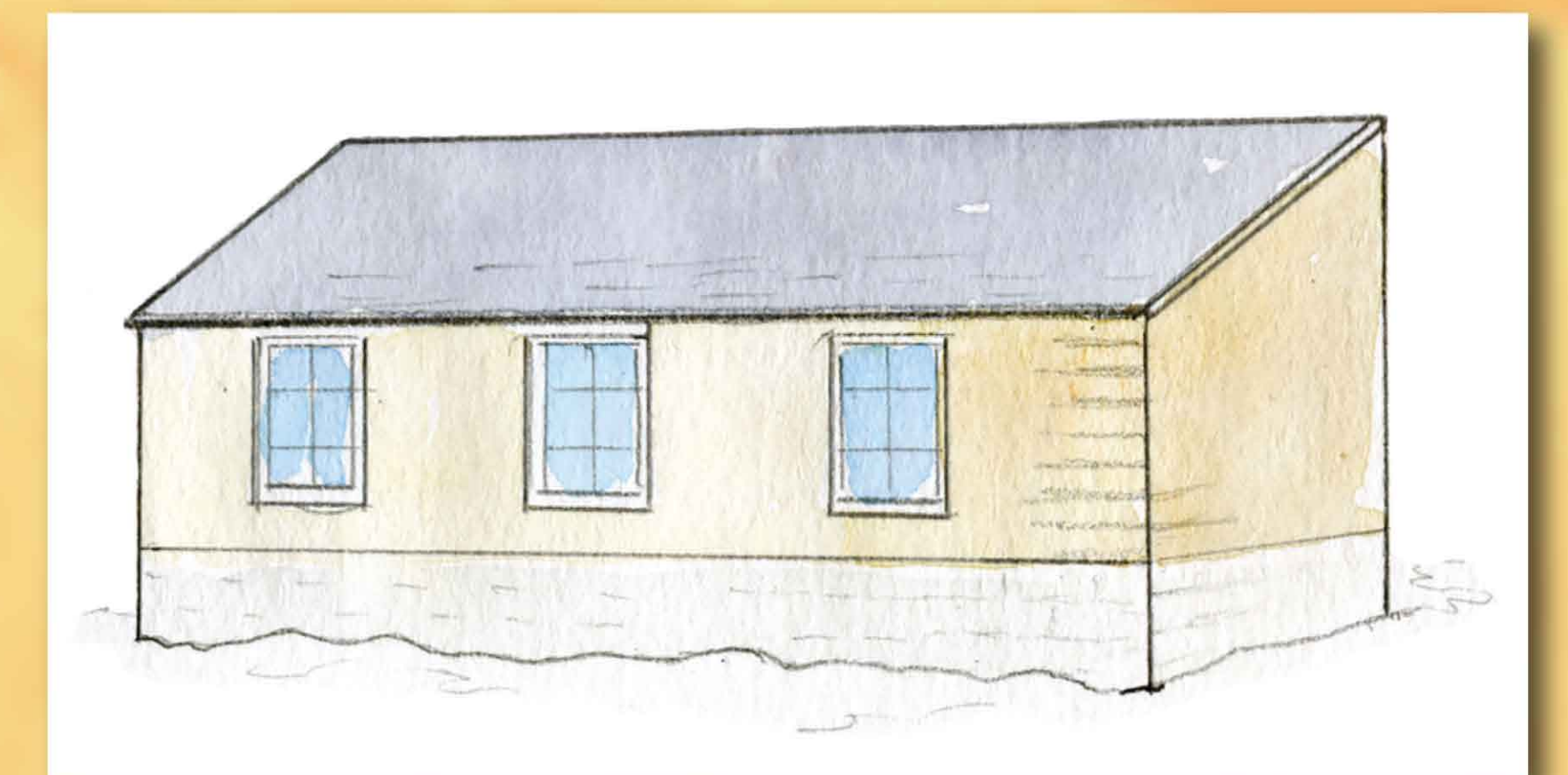
Below the living room is a dug out partial basement, which, in the 1940s, housed a warm air furnace heating system allowing heated air to rise to the floors above through a register or vented grate. After 1960, this basement area housed an oil-fired furnace for the baseboard hot water heating system.

The second addition, added in the 1880s to the north side of the log house, extended west only about $\frac{3}{4}$ the depth of the log house. There was an entrance doorway to this section from the fireplace room. According to tenants in 1949, the first level contained a kitchen and a back door screened porch with another bedroom above on the second floor.



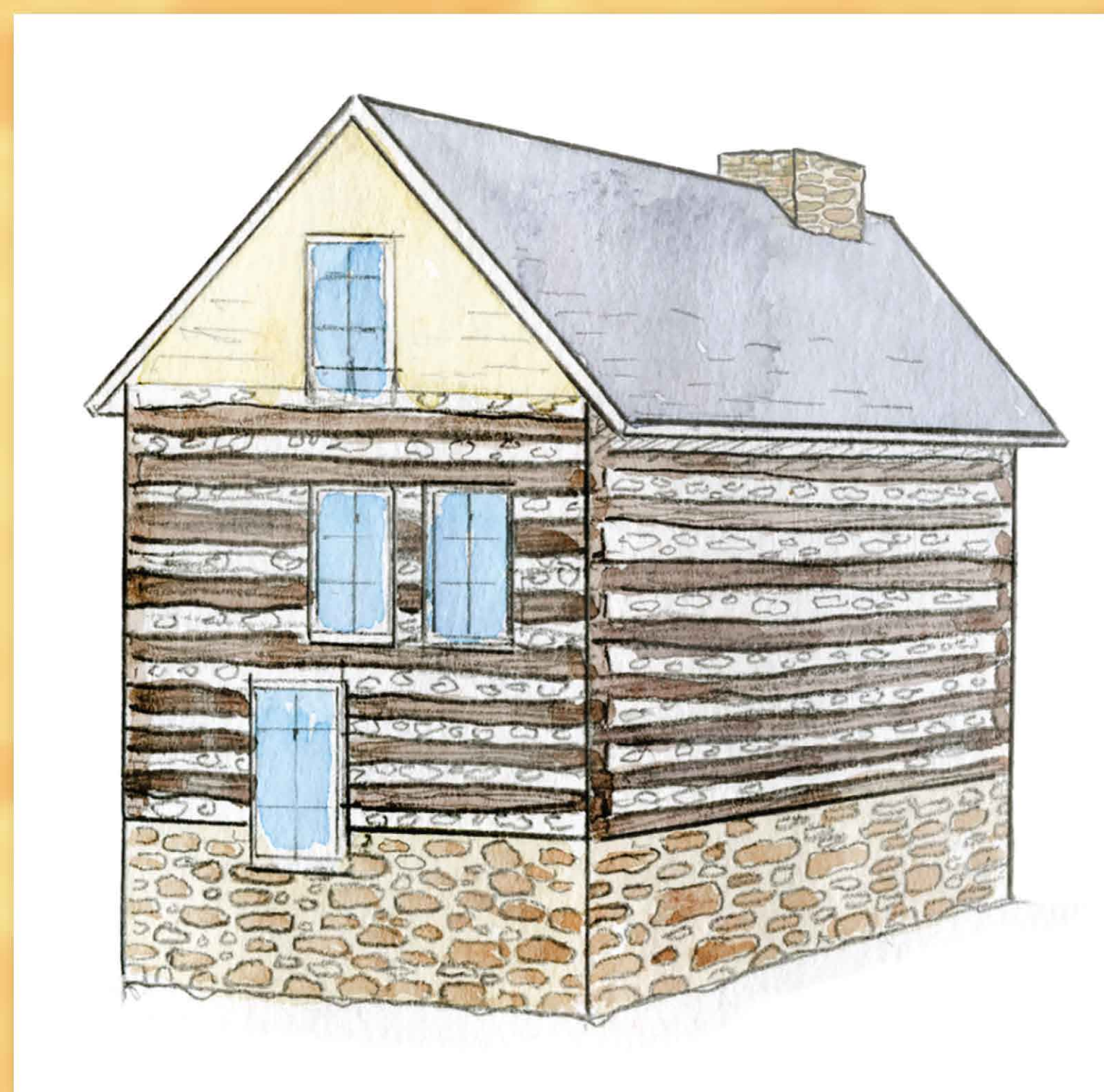
1880

The third and last addition occurred about 1961 just after Robert G. Merrick bought the property from the Jenifer family. Built onto the east side of the log house, this was a large, one story kitchen which contained an oven, a sink with running well water, a stove and lots of wall cabinets. Attached to this kitchen was a small utility room that was removed in 2014 because it was beyond repair.



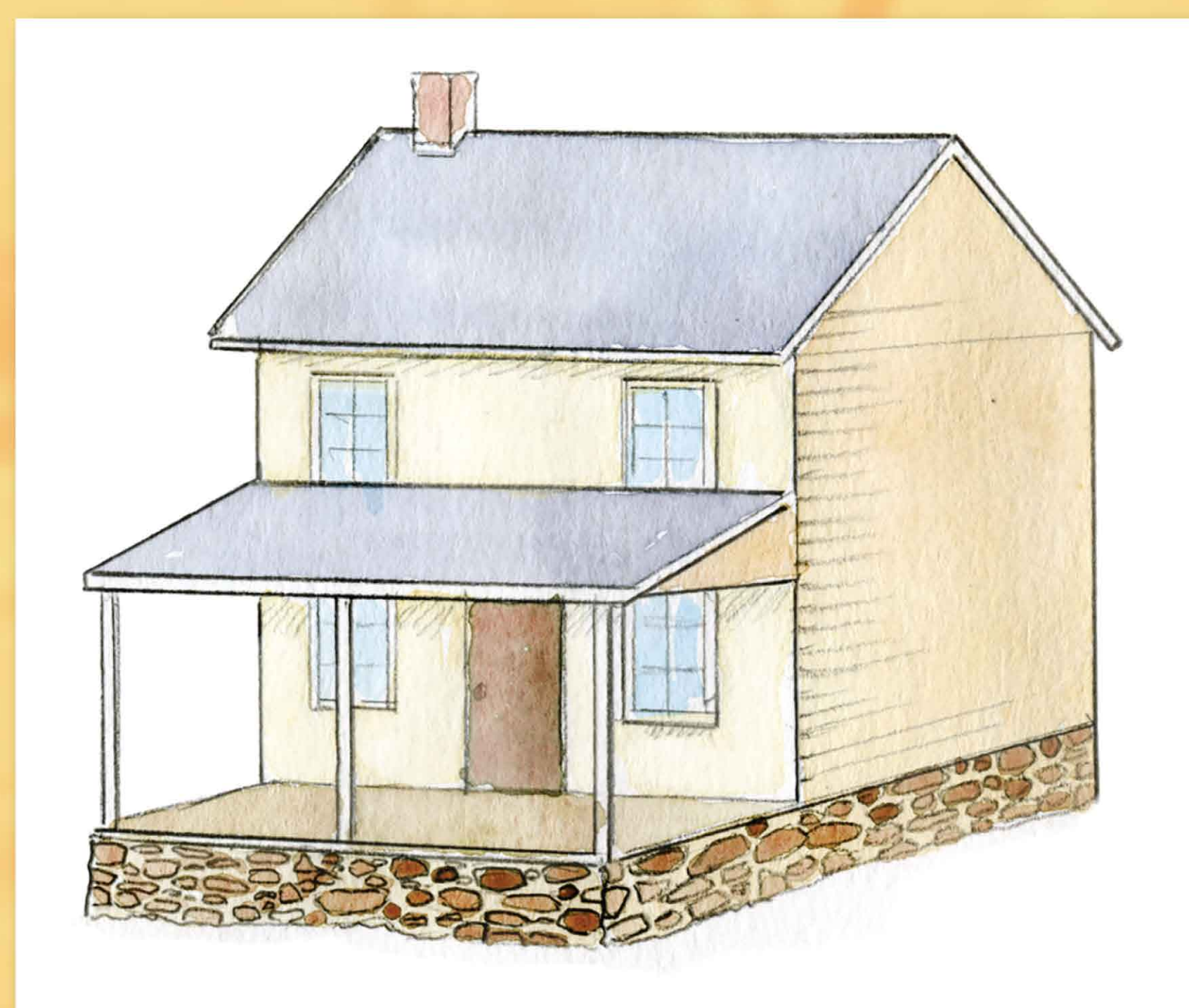
1961

The original stone and log house was constructed sometime between 1797 and 1805. (Since then there have been three additions made to the house.) The first level contained a large fireplace room on the first floor with an exposed log beam ceiling. An equally large room on the second floor was most likely used as sleeping quarters. A narrow staircase led from the second floor to a finished attic on the third floor.



1795 - 1805

The first addition was built onto the south side of the log house sometime between 1840 and 1860. Its first floor contained a living room with an iron furnace or potbelly stove protruding from the south wall chimney and the north wall contained a doorway entrance into the original fireplace room. The west wall supported an on-wall staircase leading to the second floor, with an enclosed closet under the stairs.



1840 - 1860

On the left at the top of the stairs, there is a doorway into the second floor of the log house. Ahead and to the right is a large room, probably used as another bedroom. Above this room is an unfinished, blind attic showing original cedar shake shingles of the log house roofing.

