

Cromwell Valley Park Council, Inc.

Autumn 2024 Newsletter

www.cromwellvalleypark.org

info@cromwellvalleypark.org

2002 Cromwell Bridge Road, Parkville, MD 21234

Park Office: 410-887-2503



**Educational Programs – Seasonal Programs – Community Service Projects – Bird Watching
Habitat Restoration – Hiking Trails – Summer Day Camp**

LETTER FROM CVPC PRESIDENT, ABE YOFFE

Dear Members,

I write to you at a very interesting time in the history of the Cromwell Valley Park Council and our relationship with the Baltimore County Department of Recreation and Parks (BCRP). As some of you may know, BCRP has announced and implemented a variety of changes to the relationship between themselves and the volunteer Nature Councils, like ours, and Recreation Councils, which have supported BCRP for decades. The County is calling this “Reimagine Recreation and Parks” and you may learn more about it here: <https://www.baltimorecountymd.gov/departments/recreation/reimagine-recreation-and-parks>.

You may have already noticed one of the most conspicuous changes connected with this initiative. Registration for programs led by the Park Staff is now managed through a new online platform called Civic Rec, which you may access here: <https://recandparks.baltimorecountymd.gov/MD/baltimore-co-md/catalog>.

Less obvious, but no less important, is the impact that this change, and others, will have on Cromwell Valley Park Council and Nature Councils generally. Under the new initiative, program registration fees are now being collected by the County instead of the Councils, and the income generated will go into a general BCRP fund, not to the individual parks or recreation programs. Historically, the surplus from these program fees went directly back to the same park or recreation program. As a direct result of this change, Nature Councils will have significantly less ability to impact the way that these funds are spent, and will experience a negative impact on their operating budgets. >>



Photo by Dennis Murphy 9/3/24
1st Year Coyote on Sherwood Field

Your direct memberships and donations to the Cromwell Valley Park Council **will** stay within our park for the improvement and betterment of these 460+ acres for our visitors. **Due to these changes, your direct, charitable donations to CVPC are more important than ever, as we need to raise more donations to make up for the lost revenue. You can donate using the link below or via Venmo or Paypal.**

<https://www.cromwellvalleypark.org/donate/>

PAYPAL: @CromwellValleyParkCo

VENMO: @CromwellValleyPark

Please also know that we have been collaborating with the other Nature Councils (Lake Roland, Oregon Ridge, & Marshy Point) as a unified front to advocate for ourselves, our parks, and all of our constituents. In particular, we have been working with BCRP to draft a Memorandum of Understanding, which will clearly detail the respective roles and responsibilities of the individual Nature Councils and BCRP. The movement towards an agreement is progressing slowly.

While the rules of the game are being changed, Cromwell Valley Park Council is committed to continuing our mission, which is to advocate for the best interests of the park and its patrons, perform maintenance that the County does not do itself, and organize events for public enjoyment.

In other news, we have recently updated our bylaws and restructured our committees. We are looking for more people to get involved and participate in running the Council, so please email president@cromwellvalleypark.org if you are interested in volunteering.

On July 20th, we were delighted to host a free performance of *A Midsummer Night's Dream* by the *Chesapeake Shakespeare Company*. Attendance exceeded all expectations, and the event was a huge success with over 500 guests in attendance and much Midsummer Merriment! We hope to continue this partnership in years to come.

Finally, we are bringing back the **Fall Harvest Festival** in conjunction with the Towson Arts Collective's **Arts in the Park** event! Please join us on September 28th for games, crafts, live animals, art, music, and food!

Sincerely,
Abe Yoffe, President
Cromwell Valley Park Council, Inc.

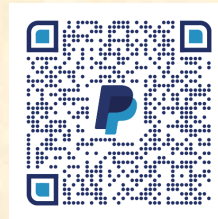
Open your VENMO
or PAYPAL app and
SCAN to **donate** or
**renew your
membership**

Cromwell Valley Park Council
@CromwellValleyPark



venmo

paypal.me/
CromwellValleyParkCo



PEEK INTO THE PARK'S PAST

Have you ever wondered how CVP was created? This new quarterly column, brought to you by the Council's *History and Cultural Heritage Committee*, will explore the Park's formation and history. We are excited about this work and welcome your input and suggestions.

A Brief History of the Formation of Cromwell Valley Park

In the early 1980's, what is today's Cromwell Valley Park – a diverse acreage of woodlands, meadows, streams and farms – attracted the attention of developers who planned a 1500-unit residential community. At this time, a number of major landowners sought to rezone their property to maximize its economic value. Other neighbors organized to defeat the rezoning, branding themselves The Campaign to Save Cromwell Valley (CSCV). After a good deal of grassroots political and legal effort, this campaign was successful.

In 1989, upon the death of Donald Sherwood, his widow, Frances, placed 102 acres of Sherwood Farm in an agricultural easement with the Maryland Environmental Trust. While this act initiated the formal effort to create the park, hundreds of acres were still at risk, and tension between developers and preservationists continued unabated.

In 1993, Governor William Donald Schaefer was persuaded to visit the Park and later that year, at his direction, the State purchased the 220-acre Satyr Hill Farm from the Merrick family. This second parcel is now known as the Willow Grove Farm.



View of historic Lime Kilns— Photo Long Island Farm archives

In 1994, Program Open Space purchased a third parcel, 45-acres of Good Fellowship farm from Franklin Eck. Since the 90's, two additional parcels have been added: In 2008, the 51-acre Barran's property was purchased by the State at the prompting of the Friends of Cromwell Valley Park, the organization which succeeded The Campaign to Save the Valley and later became the Cromwell Valley Park Council. In 2015, the 19-acre Simm's property (formerly Betty's Gardens) property was added to the County lease for Willow Grove Farm, completing the footprint of the Park we know and love today.

Due to the advocacy of our volunteers throughout the years, the park is a respite for all!

Cromwell Valley Park Council History and Cultural Heritage Ad Hoc Committee

Bluebird Boxes at CVP

There are a total of 33 bluebird boxes, maintained by Park Naturalist, Laura Lechtzin, and park volunteers, and are positioned in key locations throughout the park:

- Along the east side of the Sherwood Farm entrance road south of Minebank Run, and along the Minebank Run Trail on the south side of the stream between the Sherwood Farm and Willow Grove Farm entrance roads.
- Along the Birder's Loop and at the edges of the meadow where the Birder's Path is located, as well as in the field along the Sherwood Farm Trail just southwest of the Willow Grove parking area and at the Nature Center and Children's Garden.
- At the Lime Kilns and along the Loch Raven Drive Trail, where it passes through fields near the northeast border of the park.

Ranger Laura provides CVP's data to *NestWatch* and *estimates* the 2024 fledglings hatched in these boxes as of 9/4/24 are as follows:

Eastern Bluebird	45
Tree Swallows	45
House Wren	42
Carolina Chickadee	4

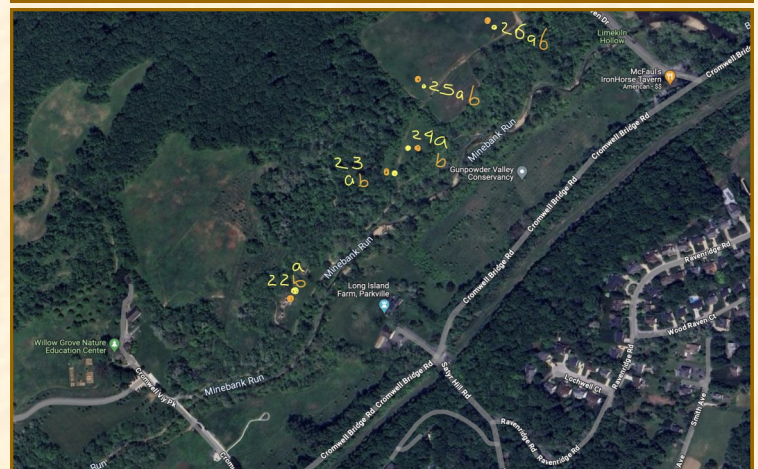
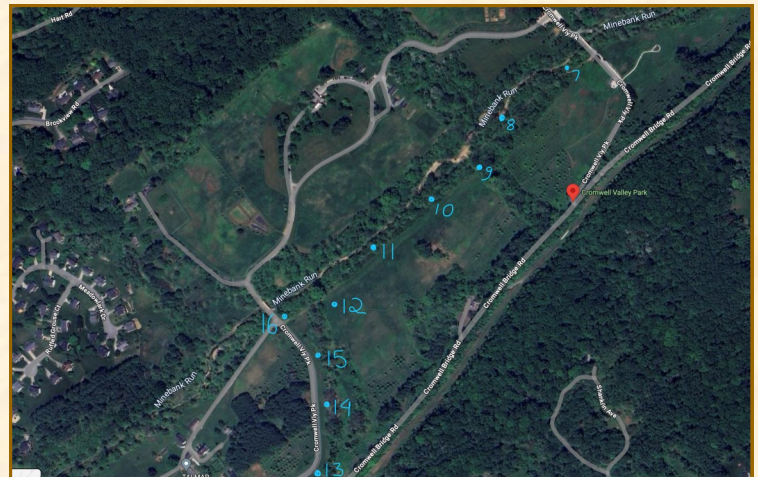
The final calculations will be submitted in January 2025. Though we had some nesting deaths this year, perhaps to the extreme heat and decrease in insect activity, we are pleased we were "House-Sparrow-Free" due to mitigation practices.

THANK YOU, NATURALIST LAURA!

The Birder's Guide entry for Cromwell Valley Park is online at <https://birdersguidemddc.org/site/cromwell-valley-park/>



Photo by Mia Walsh



Cultivating Growth and Community:

The Children's Garden Club at Cromwell Valley Park (Part 2)

Stacey Cruise, CVP Council Director

Throughout the summer, the Children's Garden Club at Cromwell Valley Park has been a center of activity and learning. Young gardeners and their dedicated adult chaperones work

diligently on their personal plots and the community rows. Rain or shine, under the guidance of Naturalist Grace Weiss, the club blooms on Saturday mornings. Each gardening session is a blend of hard work, rewarding harvests, fun crafts, and delicious treats straight from the garden.

Whether it's sunny or rainy, the enthusiasm of the young gardeners never wanes. The excitement of seeing seeds sprout, grow, and finally yield produce is matched only by the satisfaction of taking them home and tasting the fruits of their labor.

We've planted various crops in community rows for a bountiful harvest as we move closer into the cooler months. Pumpkins slowly ripen, sweet potatoes thrive underground, and carrots push their

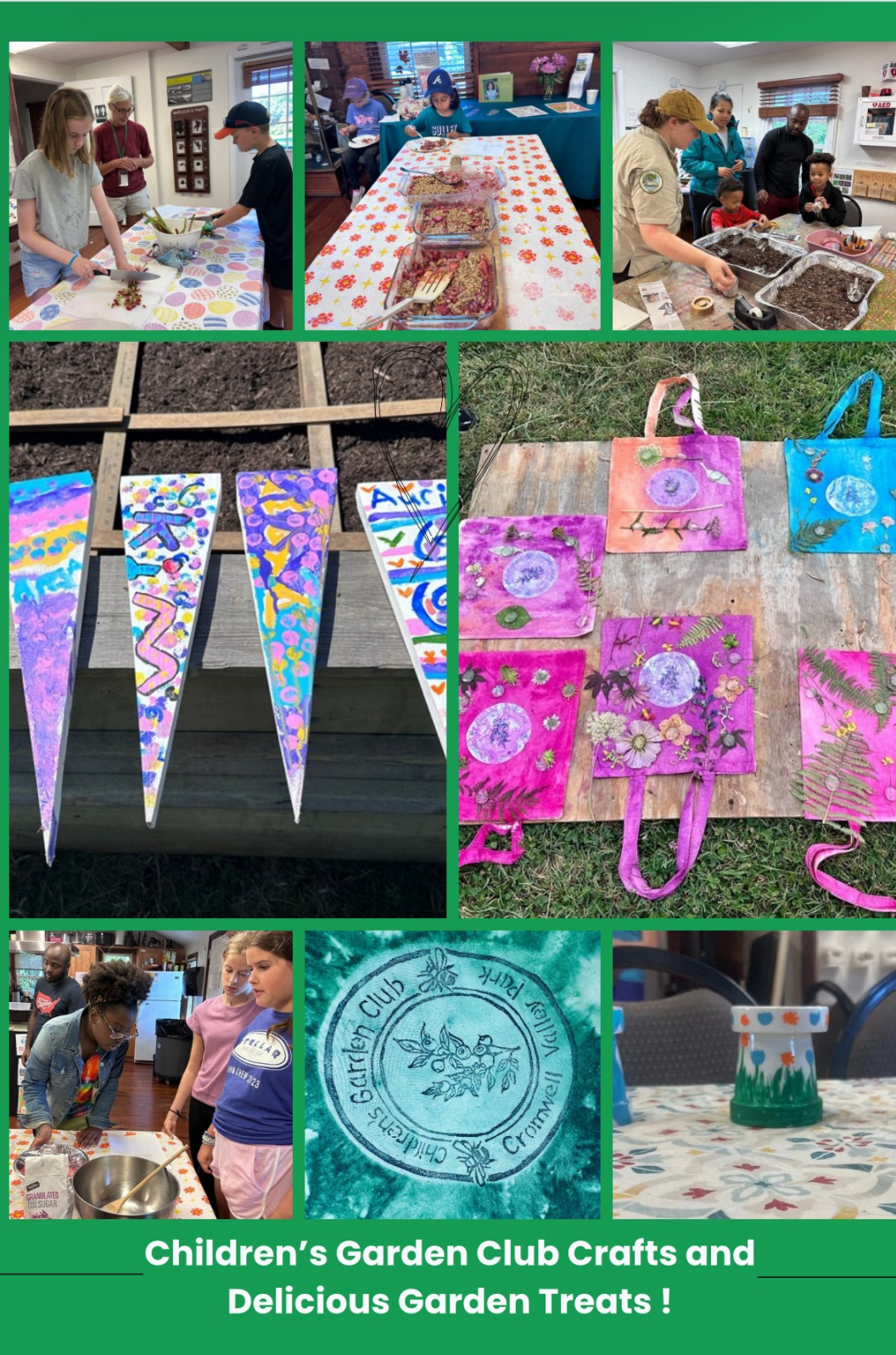


vibrant tops above the soil. These cooperative efforts teach the children about shared responsibility and teamwork. There's always plenty of weeding and watering, which are crucial in keeping our gardens thriving. The children are learning that a garden requires consistent care and attention, a valuable lesson that extends beyond the garden itself.

In addition to gardening, the club's sessions have been rich with educational content. Science lessons are woven into the gardening experience, making the garden a living classroom. One of the highlights this season was learning about natural pesticides, an activity that taught the children about eco-friendly alternatives for ridding their gardens of harmful insects.

As we look forward to the rest of the season, the sense of community Ranger Grace fosters within the Children's Garden Club continues to deepen. Under her

guidance, our gardens are flourishing, and so too are the connections between participants. The garden club is where children bloom. As we move forward, we are eager to watch our gardens and young gardeners continue to grow!



Children's Garden Club Crafts and Delicious Garden Treats !

Woodpeckers – Threat to National Security?

Woodpeckers come by their name honestly- they love to drum, rap and tattoo on wood. As many readers know, they also peck on house siding, no matter what it is made of. If this happens to you, just put some aluminum foil on the impacted area- it will act like a mirror and deter Woody.

Count yourself lucky if your only problem with woodpeckers is banging on your siding. The 1997 STS-70 space shuttle mission was delayed for a month by a single woodpecker attacking the foam insulation on its fuel tanks. The damage was so substantial – over 200 holes - that the space shuttle, set to launch the day after the holes were found, could not be repaired on the launch bay but had to be returned to the Vehicle Assembly Building. Biologists determined, after studying film from dozens of cameras observing the rocket, that one **Northern Flicker** was responsible for all the holes. The insulation was about 3-4 inches thick and the determined bird kept trying to find a place where he could get deeper to reach insects. Instead, he kept hitting aluminum. Towson-based retired astronaut, Don Thomas, a mission specialist on STS-70, in his memoir *Orbit of Discovery*, describes how frustrating it was for NASA to be outsmarted by a woodpecker.

Cromwell Valley Park provides a much more friendly natural habitat for 6 of the 7 woodpeckers found in Baltimore County. On a recent drizzly Sunday afternoon, during a hike led by Park Naturalist

Laura Lechtzin, 4 of the 6 were spotted: a Northern Flicker of NASA fame, a Yellow-bellied Sapsucker, male and female Red-bellied Woodpeckers, and a male Hairy Woodpecker.

Lechtzin educated us as we hiked. Woodpeckers have chisel-like beaks and small facial feathers to keep wood chips out of their eyes and nose. Long tongues allow access to larvae deep in cracks and the tongues have a barb on the end to hold onto prey. Their toes are zygodactyl- two facing forward and two facing backward so they can perch perpendicularly on trees.

The toe architecture also helps

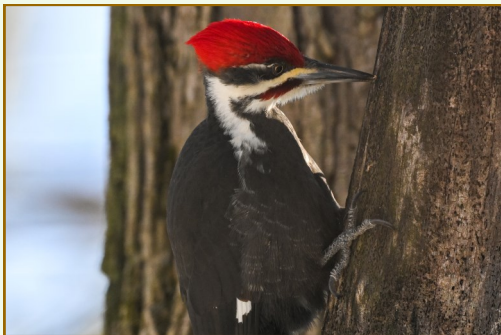
them hold on while they are drumming. They have a strong stiff rear tail that acts like the spoiler on a race car to keep them stable by balancing the force applied by their head.

Do woodpeckers get concussions or CTE from all that banging? No. Their skulls are designed to absorb shock. The lower beak is longer than the upper which helps divert force downward. The skulls are made up of uneven spongy plates and the brain is encased in its seatbelt-like hyoid bone to keep it from sloshing around. Some scientists differ and believe woodpeckers are just tougher than humans.

Downy Woodpeckers are the tiniest members of the species weighing less than one ounce. Their light weight, however, allows them to feast on protein snacks that larger woodpeckers cannot access. For example, the goldenrod gall fly, a species of fruit fly, forms a hard knot on the



Downy Woodpecker

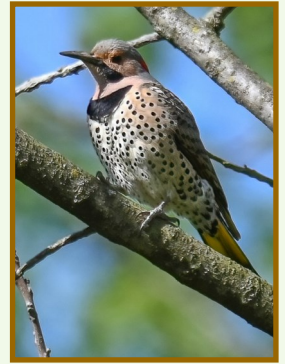


Pileated Woodpecker



Red-bellied Woodpecker

stalks of goldenrod when it lays its eggs. The Downy Woodpecker can perch on the stalks in winter even when they are brittle and dried out and get the larvae inside the stalk. The largest woodpecker is the **Pileated** (from the Latin pileatus meaning capped). These iconic birds make rectangular-shaped openings in trees. The **Northern Flicker**, in addition to its love of spaceships, also seeks food on the ground, not just in trees. This makes it vulnerable to sharp shinned hawks and other raptors.



Northern Flicker

Try to remember, when the rapping is driving you crazy, if it is on your house (or spaceship), that it is natural noise, not anthropogenic like a leaf blower or lawn mower. Woodpeckers are a keystone species and the drumming (up to 20 times a second) is how they mark territory and attract mates. The drumming creates a habitat for themselves and many other non-drilling creatures. They control insect pests such as wood-boring beetles. Their antics delight birdwatchers of all ages and they are cultural icons. The woodpecker beleaguered space shuttle mission adopted the woodpecker as its mascot and the astronauts' mission patches paid homage to woodpeckers. If they are still annoying you, consider making a "bongo box" out of wood. Just like what it sounds, bongo boxes provide an alternative location, near but not on your house, that woodpeckers will prefer. Plans are widely available online.

Carl R. Gold is a Maryland Master Naturalist, cgold@carlgoldlaw.com, Instagram @crgkoko

All photos in this article by Mia Walsh taken in Cromwell Valley Park

What Species are those Feces? By Ranger Kirk Dreier

Talking about "poop" can sound rude, but in fact, what comes out of an animal can tell you a lot about the creature in question.

Why am I speaking of such things? Well, for one thing, Ranger Anne often includes such studies in her Polliwog pre-K program to identify animals that live in and around the Nature Center. To make it "fun", they create chocolate versions of some of the scat; which I guarantee the children will never forget.

With all funding and financial support from Cromwell Valley Park Council, CVP Staff have created a new exhibit and installed it in the exhibit/kitchen area of the Willow Grove Nature Center (coincidentally it is located directly adjacent to the bathroom). To confess, I stole the idea for Marshy Point Nature Center which I

thought was quite clever. This exhibit features eight of some of the most common "scats" a visitor is likely to find on the trails or around the outside of the Nature Center. The exhibit was built by our very own part-time naturalist/carpenter/taxidermist Cap'n Jim Gephardt. So when you visit CVP, take a look at the exhibit, and you might be surprised by who leaves what in the woods!





PROGRAMS & EVENTS CALENDAR

CROMWELL VALLEY PARK

2002 Cromwell Bridge Road, Parkville, MD 21234
410-887-2503



Space is limited!
Please arrive PRIOR to start of program as
programs begin promptly at designated start time.

If you require special accommodations (i.e.,
language interpreter, large print, etc.) please
give us as much notice as possible by calling the
Park Office at 410-887-2503/ TTY 711.

OCTOBER 2024

Registration for programs and
events at Cromwell Valley Park
will now be done through CivicRec.

To register for programs:
Scan the QR code or visit the link below:



<https://recandparks.baltimorecountymd.gov/MD/baltimore-co-md/catalog>

Registration is REQUIRED for ALL programs.

Children under 18 years of age MUST be accompanied by an Adult.

MEET AT THE NATURE CENTER upon arrival for check in.

Please DO NOT BRING YOUR PETS to programs.

Willow Grove Nature Center is open DAILY 9am-5pm.

The Park is open SUNRISE to SUNSET.

Cars left in the park after sunset WILL be given a citation.

Wednesdays, October 2, 9, 16, 23, and 30 at 9:30 AM to 10:30 AM: Autumn Senior Stroll – Ages 55+. Walking in nature provides benefits to both the mind and body. Enjoy a relaxing stroll with one of our Naturalist along some of Cromwell Valley's less strenuous trails. FREE! Registration Required.

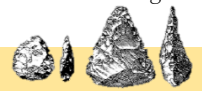
Saturdays, Starting October 5 through November 16 at 8 AM to 10 AM: Saturday Morning Bird Walks - Ages 14+ with an Adult. This fall join a Park Naturalist on Saturdays for an early morning bird walk. FREE! Registration Required.

Saturday, October 5 at 1 PM to 3 PM: Hunt for the Wild Banana – Ages 18+ with an Adult. Hike with a Naturalist to find one of Maryland's native fruits - the Pawpaw - and then enjoy Pawpaw ice cream! This is a strenuous hike uphill - 3 miles round trip. Wear sturdy shoes and bring water. \$6. Registration Required.

Sunday, October 6 at 1 PM to 2:30 PM: The Milkweed Community – Ages 5+ with an Adult. A host plant for the Monarch Butterfly, each Milkweed plant also supports a small world of insects, amphibians, birds and more! Join a Naturalist to learn about who benefits from this amazing plant. \$3. Registration Required.

Saturday, October 12 at 10 AM to 4 PM and Sunday, October 13 at 10 AM to 1 PM:

Primitive Technology Weekend– All Ages with an Adult. You are invited to the Willow Grove Nature Center's Annual Primitive Technology Workshop for the purpose of sharing knowledge and hands-on experience in the replication of items composed of stone, bone, wood, and natural fibers. Activities for children and adults, lectures, and demonstrations. Camping for this event is available Friday 10/11 and Saturday 10/12 ONLY. You MUST register for camping online. \$6 per person to camp. Children under the age of 18 MUST be accompanied by an Adult. The event is FREE!



Monday, October 14: Indigenous Peoples' Day! - Nature Center & Park Office will be closed, but the Park will be open sunrise to sunset for this Holiday.

Friday, October 18 at 7 PM to 8:30 PM: Spooky Stories around the Campfire - Ages 8+ with an Adult. Swap spine-tingling tales around the campfire ring. Bring a flashlight with you and a (not too) scary story to share while we roast s'mores! \$6. Registration Required.

Saturday, October 19 at 1 PM to 3 PM: Over in the Meadow – Ages 5+ with an Adult. Walk with a Naturalist along our meadow trails and learn about the beauty, value, and ecological function of this important habitat. FREE! Registration Required.

Sunday, October 20 at 10:30 AM to 12 PM: Paint a Pumpkin – Ages 3+ with an Adult. Bring your little one to paint a winter squash – the pumpkin \$6 per pumpkin. Registration Required.

Thursday, October 24 at 10:30 AM to 11:30 AM: Project Feeder Watch Training – Adults, Ages 18+. Count birds for science, but first, attend this training to learn how! After the training, we will meet weekly at the Nature Center on Tuesdays and Wednesdays for your 1-hour shift, starting November 1st 2024 and runs through until April 30, 2025. FREE! Registration Required.

Saturday, October 26 at 9 AM to 12 PM: Drop in Gardening! – Ages 13+ with an Adult. Volunteers join us for a morning in the garden. We provide direction, gloves, tools and water. You bring a hat, sunscreen and a little energy. FREE! Registration Required. *Children's Garden*

Saturday, October 26 at 1 PM to 2:30 PM: Little Brown Bat – What's Your Habitat? – All Ages. Learn all about nature's only flying mammal and how we can support them. Then make a bat-inspired craft to take home with you. \$3. Registration Required.

Sunday, October 27 at 11 AM to 2 PM: Silly Spooky Halloween Trek – Ages 2 to 12 with an Adult. Start your self-guided adventure at the Nature Center by picking up a trail trek booklet. Once you have discovered the tricks on the trails, head back to the Nature Center to collect your treats! Come dressed in your costume! \$3. Registration Required.



PROGRAMS & EVENTS CALENDAR

CROMWELL VALLEY PARK
2002 Cromwell Bridge Road, Parkville, MD 21234
410-887-2503



If you require special accommodations (i.e., language interpreter, large print, etc.) please give us as much notice as possible by calling the Park Office at 410-887-2503/ TTY 711.

Space is limited!
Please arrive PRIOR to start of program as programs begin promptly at designated start time.

NOVEMBER 2024

Registration for programs and events at Cromwell Valley Park will now be done through CivicRec.



To register for programs:
Scan the QR code or visit the link below:

<https://recandparks.baltimorecountymd.gov/MD/baltimore-co-md/catalog>

Registration is REQUIRED for ALL programs.

Children under 18 years of age MUST be accompanied by an Adult.

MEET AT THE NATURE CENTER upon arrival for check in.

Please DO NOT BRING YOUR PETS to programs.

Willow Grove Nature Center is open DAILY 9am-5pm.

The Park is open SUNRISE to SUNSET.

Cars left in the park after sunset WILL be given a citation.

Saturdays, November 2 through November 16 at 8 AM to 10 AM: **Saturday Morning Bird Walks** - Ages 14+ with an Adult. This fall join a Park Naturalist on Saturdays for an early morning bird walk. FREE! Registration Required. Meet at the Willow Grove Gravel Parking Lot.

Saturday, November 2 at 1 PM to 3 PM: **Pine Needle Coasters** - Ages 16+ with an Adult. Pine needle basketry is a tradition among several Native American tribes. Learn the basics of this ancient craft as you make a coaster at the *Primitive Technology Laboratory*. \$6. Registration Required.

Sunday, November 3 at 1 PM to 3 PM: **Hike Through History** - Ages 14+ with an Adult. Join a Naturalist to learn who called Cromwell Valley home before it was a Park. FREE! Registration Required.

Saturday, November 9 at 11 AM to 1 PM: **Sparrow Spotting** - Ages 12+ with an Adult. Sparrows, often overlooked as LBJ "little brown jobs" migrate and remain active in the fall. We'll learn about their behaviors and search for them in the park. Bring binoculars, if you have them. \$3. Registration Required.

Sunday, November 10 at 1 PM to 3 PM: **Vermicomposting** - Ages 5+ with an Adult. Working Worms! Learn how red wiggler worms can work all winter to turn your kitchen waste into beautiful soil for your spring garden. Participants will learn how to make a vermicomposting bin at home out of everyday materials - and a lucky winner will take home the demonstration model! \$6. Registration Required.

Tuesday, November 11: **Election Day** - The Nature Center and Park Office will be closed, but the Park will be open from sunrise to sunset.

Friday, November 15 at 7 PM to 8:30 PM: **Full Beaver Moon Hike** - Ages 8+ with an Adult. Learn how the beaver builds its home and then hike with a Naturalist to find signs of these resident rodents. \$6. Registration Required.

Saturday, November 16 at 1 PM to 2:30 PM: **Indigenous Peoples of Maryland** - Ages 13+ with an Adult. Indigenous Peoples hunted, fished and grew crops. Join a Naturalist to use tools they used - bows, arrows, spears, rabbit sticks and stone axes. \$3. Registration Required.

Sunday, November 17 at 1 PM to 3 PM: **Pumpkin Pie** - Ages 5+ with an Adult. Learn how to make and bake your personal own pie. Pumpkins are a plenty this time of year! Why not make a pie and bake it in the oven? Join a Naturalist as we learn about & eat this iconic Thanksgiving Day staple. \$6. Registration Required.

Saturday, November 23 at 1 PM to 2 PM: **Let's Talk Turkey** - All Ages. Benjamin Franklin wanted the turkey to be our national symbol. Meet our live turkeys on this day and learn what makes them special. FREE! Registration Required.

Sunday, November 24 at 12 PM to 3 PM: **The Fort Garrison Frontier** - Ages 10+ with an Adult. The fort was built on the Maryland frontier in 1693. Meet the Rangers and find out how they lived and what they ate. Don't miss this once-a-year event! Registration REQUIRED. Directions will be given at time of registration. Dress for the weather; FREE! *Historic Fort Garrison.*

Thursday, November 28: **Thanksgiving Day!** - Nature Center & Park Office will be closed, but the Park will be open from sunrise to sunset for this holiday!

Saturday, November 30 at 1 PM to 3 PM: **Winter Debris Shelters** - Ages 10+ with an Adult. Learn how to make a winter debris shelter (also known as a Wickiup in the Southwest) that could save your life! FREE! Registration Required.



Space is limited!
Please arrive PRIOR to start of program as
programs begin promptly at designated start time.



PROGRAMS & EVENTS CALENDAR

CROMWELL VALLEY PARK

2002 Cromwell Bridge Road, Parkville, MD 21234
410-887-2503



If you require special accommodations (i.e.,
language interpreter, large print, etc.) please
give us as much notice as possible by calling the
Park Office at 410-887-2503/ TTY 711.

DECEMBER 2024

Registration for programs and
events at Cromwell Valley Park
will now be done through CivicRec.

To register for programs:
Scan the QR code or visit the link below:



<https://recandparks.baltimorecountymd.gov/MD/baltimore-co-md/catalog>

Registration is REQUIRED for ALL programs.

Children under 18 years of age MUST be accompanied by an Adult.

MEET AT THE NATURE CENTER upon arrival for check in.

Please DO NOT BRING YOUR PETS to programs.

Willow Grove Nature Center is open DAILY 9am-5pm.

The Park is open SUNRISE to SUNSET.

Cars left in the park after sunset WILL be given a citation.

Sunday, December 1 at 1 PM to 3 PM: Build A Model Tree House – Ages 7+ with an Adult. Let your imagination soar while building a tree house using natural materials. We'll provide the base and "tree" – you create the rooms, platforms, bridges, ladders and amenities. \$6

Saturday, December 7 at 10 AM to 1 PM

Holiday Open House - All Ages. Find all of your holiday excitement on one farm. Come visit the decorated Sherwood House for the holidays. Seasonal crafts, cookie decorating, hot cider, music, and a visit with *SANTA!* \$6.

Sunday, December 8 at 10 AM to 2 PM: Holiday Trivia Trail Trek – All Ages. Pick up a self-guided trail book, answer the trivia questions, and return to the Nature Center for a prize! Drop-In program. FREE!

Saturday, December 14 at 1 PM to 3 PM: Holiday Centerpieces - Ages 13+ with an Adult. The fresh greens in your arrangement will bring the scent and beauty of the outdoors to your table. Please bring garden gloves if your hands are sensitive to the sap and prickles of the pines. \$12 per centerpiece. Registration Required.

Sunday, December 15 at 1 PM to 2:30 PM: The Simple Sling – Ages 18+. The simple weapon of choice for shepherds was the stone throwing sling. Humans manufactured a tool, steeped in antiquity, that could accelerate a stone to over 90 miles per hour. The sling was independently invented in many cultures – the Mayans of South America, the Tibetans of Asia, the Romans of Europe, and the people in the Middle East. Join a Naturalist at the Primitive Technology Laboratory to make, and then try out, your very own sling. Rock provided! \$12. Registration Required.

Friday, December 20 at 6 PM to 7:30 PM: Solstice Winter Hike – Ages 10+ with an Adult. Early man thought the sun was gone for good and built Stonehenge and other structures to see if the longer days will return. Join a Naturalist for a seat around a campfire and hot chocolate with marshmallows. \$6. Registration Required.

Saturday, December 21 at 1 PM to 2:30 PM: Hibernation, Migration, Adaptation – Ages 6+ with an Adult. Join a Naturalist and learn how Maryland's mammals, birds, and cold-blooded critters survive the colder months. Meet some of the nature center animals and make a craft. \$3. Registration Required.

Sunday, December 22 at 1 PM to 2 PM: Law of Claw & Fang – All Ages. Join a Naturalist to learn about food chains and help us feed our animal collection. Drop-In program. Registration NOT required. FREE!

Wednesday, December 25: Christmas Day! - The Nature Center and Park Office will be closed, but the Park will be open *sunrise to sunset* for this Holiday.

Saturday, December 28 and Sunday, December 29 at 10 AM to 3 PM: Visit the Nature Center - All Ages. Visit the Nature Center during the Holidays. We will have hot chocolate and cookies while you enjoy your visit. FREE! Registration NOT required. Drop-in program.

Wednesday, January 1: Happy New Year! - The Nature Center & Park Office will be closed, but the Park will be open *sunrise to sunset* for this Holiday.

Happy Holidays!

Please renew your **MEMBERSHIP**



Thank you for your continued membership in the Cromwell Valley Park Council! You help us support park programs and events.

The spring membership drive is over, but we are still missing some long-time members, whose membership expired at the end of March. We certainly don't want to lose you. If you have not yet renewed for this year, please feel free to cut out this page and send it in with your chosen membership level. Check the back cover of this magazine to see your expiration date. Join or renew online at: <https://cromwellvalleypark.org/membership/>

Or, Join or renew by mail: please make check payable to CVPC and mail to:

CVPC Membership
2002 Cromwell Bridge Rd
Parkville, MD 21234

Please select your membership category:

Individual	\$15	Non-profit Organization	\$25
Couple/Family	\$20	Contributing	\$50
Senior Citizen, Individual 65+	\$10	Sustaining	\$100
Senior Citizen, Couple 65+	\$15	Patron	\$250
		Corporate	\$250
		Life Member	\$1,000

Name: _____

Street Address: _____

City: _____ Zip code: _____

Phone: _____ E-mail: _____

Membership Amount: \$ _____

Additional Tax-deductible contribution: \$ _____

Total Enclosed: \$ _____

Date: _____

Why Giving Tuesday is Important to CVPC

As you read in the President's opening letter, things are changing in Baltimore County and the Department of Recreation and Parks and its relationships with the Nature Centers you know and love. These changes, however, won't stop the efforts and advocacy of our Cromwell Valley Park Council volunteers. Each year, we focus our year-end giving (starting with Giving Tuesday) on something to improve the park itself or to help US improve the park. This year is no different and **YOUR DONATIONS MATTER!**

In 2023, we raised money to enhance the Honor Garden, which has a beautiful vista of the open fields and ridgeline beyond the Sherwood House's front lawn. With generous donations honoring loved ones, *Phil Tupper, Dr. Alan Lake & Dr. Pat Kingman*, along with individual donations from park-lovers like you, our vision came alive! The concept design, created by Calvert Hall College graduate of the Class of 2020, Charles Suter, took full advantage of his studies from his landscape

architecture classes at Mississippi State. Charles chose appropriate native plants tolerant of deer, and planned for wow-factor entrance and bucolic views of the forward vista. Charles currently works at Lambert's Landscape Company.

In 2024, we will be focusing our fundraising efforts on purchasing another John Deere Gator to replace ours from over a decade ago.

Our 2020 fundraising allowed us to purchase a 4-seater and we have so many Trails and Weed Warrior volunteers, we need to raise \$14,000 for another one in 2024. **PLEASE CONSIDER A DONATION TODAY!**



Clockwise: Original Honor Garden concept designs, Designer Charles Suter, our 2020 Giving Tuesday Gator purchase, Current Honor Garden in August 2024.

WE LOOK FORWARD TO SEEING YOU AT THE FALL HARVEST FESTIVAL!

Cromwell Valley Park Fall Harvest Festival

Saturday, September 28th, 2024
10-4

Hikes and Hawk Watch, Native Animal Exhibits,
Cider Pressing, Rope Making, Hay Scramble,
Pony Rides, Vendors, Food, Music and More!
In partnership with the Towson Arts Collective
and Arts in the Park
Parking fee \$6.00 per car



Volunteer here:

<https://bit.ly/FallHarvestandArtsintheParkCVP2024>
or email events@cromwellvalleypark.org

Would you like your photograph on the Cromwell Valley Park Council
2024 Year-end / Holiday card? Submit your photo TAKEN AT THE
PARK to communications@cromwellvalleypark.org along with a few



sentences about why
you LOVE the park as
much as we do!



Night Out with Nature Speaker Series is a Cromwell Valley Park Council sponsored event, with all ticket sales going directly back to our Council (and therefore CVP!). Registration is through the Council's CampBrain registration system, or just go to our website and click the register button.

Dessert and refreshments will be provided, along with an interesting lecture, and new friends to meet!

JOIN US TODAY!

<https://cromwellvalleypark.campbrainregistration.com/>

The Cromwell Valley Park Council
presents
A Night Out with Nature
Speaker Series




This program is designed for adults.

Please register online at:
https://www.cromwellvalleypark.org/event_calendar/

\$10 per person
Dessert will be provided and is included in your admission

Brian Rollfinke, Director of Education & Outreach
Wild Birds Unlimited, Timonium

“Backyard Bird Conservation”
6:30 PM, Friday, November 8th, 2024

Sherwood House at Cromwell Valley Park
2002 Cromwell Bridge Rd, Parkville, MD 21234

Saving Birds . . . Starting in Your Own Yard

Hear how Wild Birds Unlimited's Save the Songbirds campaign has partnered with the National Wildlife Foundation's Garden for Wildlife program to inspire homeowners to “rewild” grass lawns back into native habitat for our feathered friends—and a host of other critters. Learn how to provide food, water, and cover in sustainable ways and how to minimize the many hazards that migrant birds face along their increasingly dangerous seasonal journeys. Small steps, taken by many of us together, can help conserve our remarkable avian diversity for generations to come.




Brian Rollfinke became interested in birds as a child, thanks to a local college professor, who invited him to observe, then eventually help, for several seasons at a small bird-banding operation in the mountains of Central Pennsylvania. Brian went on to earn a B.S. in Biology from Wake Forest University, then a M.S. in Ecology, with a focus on forest songbirds, from Penn State.

His career in environmental science was put on hold for a brief 31 years, during which he taught math and coached baseball at a Baltimore independent school, got married, and raised two sons, who share his passion for orioles (both those found in sycamores and in the dugout.) Various ‘citizen science’ projects occupied whatever free time Brian had during those busy decades.

Upon becoming an empty nester, Brian returned to his first passion, working as Director of Education at Irvine Nature Center for 3½ years and now as Director of Education & Outreach at Wild Birds Unlimited.

The Cromwell Valley Park Council
presents
A Night Out with Nature
Speaker Series




Dr. Wayne Bell

“Where Have All the Birds Gone?”
6:30 PM, Wed, October 9th, 2024

Sherwood House at Cromwell Valley Park
2002 Cromwell Bridge Rd, Parkville, MD 21234

PLEASE NOTE: this event is on Wednesday evening!

This program is designed for adults.

Please register online at:
https://www.cromwellvalleypark.org/event_calendar/

\$10 per person
Dessert will be provided and is included in your admission

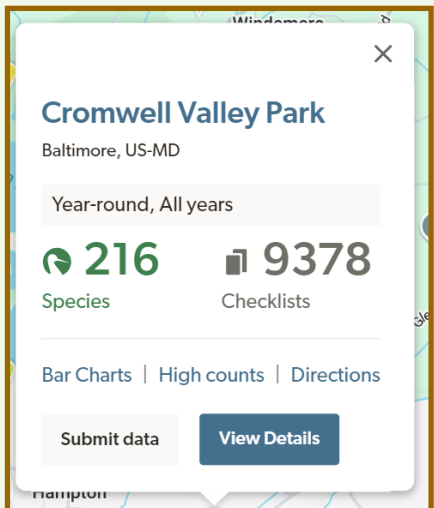
Dr. Wayne Bell will speak about the decline in bird populations across Maryland's Eastern shore, and discuss how we all can help by creating critically important new bird habitat.



A Cedar Waxwing amid some pokeweed on Poplar Island (Photo by Dr. Wayne Bell)

Dr. Wayne Bell is Senior Associate and former Director of the Washington College Center for Environment and Society. A native of Silver Spring, MD, he graduated from University of Miami, Florida, and earned his Ph.D. from Harvard University where E.O. Wilson infected him with a lasting love of all things ecological. Retired since 2008, Dr. Bell continues his passion for birds and teaching through the Maryland Ornithological Society Youth program (YMOS) and the Chesapeake Forum for continuing education. He and his wife, Joyce, have lived in Easton, MD, for the past 40 years.

Did you know that Cromwell Valley Park is a **birding hotspot** in eBird?



Cromwell Valley Park Council, Inc.
2002 Cromwell Bridge Rd.
Baltimore, MD 21234

Non-Profit Org
US Postage Paid
Baltimore, MD
Permit # 342

Membership / Member ID / Exp. Date:

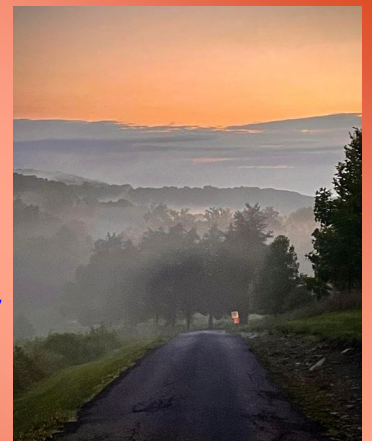
Use this QR code to access
the full events calendar:



or visit us online at:

<https://cromwellvalleypark.org>

***Park
hours:
Sunrise
to Sunset***
(don't get locked in)



Cromwell Valley Park Council Newsletter Staff

Communications Committee: ***Mia Walsh,
Pat Novak, Kim Shapiro & Dave Schroeder***

Contributors: ***Abe Yoffe & Carl Gold***